



NO  
O  
N  
L



**PREMIER**  
CONSTRUCTIONS AUSTRALIA

Capability Statement

# CONTRACTS

02

## **Introduction**

Company Overview • Company Values

06

## **Civil Infrastructure Projects**

Project Highlights • Experience Overview

11

## **Commercial Development Projects**

Project Highlights • Experience Overview

16

## **High-Rise Residential Projects**

Project Highlights • Experience Overview

20

## **Renewable Energy Projects**

Project Highlights • Experience Overview

25

## **Contact Us**

Office Locations • Contact Details

WWW.PREMIERCONSTRUCTAU.COM • 1800 PREMAU •

A large white truck with 'PREMIER CONSTRUCTION AUSTRALIA' and 'CONCRETE | LABOUR' printed on its side is shown in a construction setting. The truck is partially obscured by a large green diagonal graphic element on the left side of the page.

## ABOUT US

Established since 2015, Premier Constructions Australia (Premier) is a fast-growing construction subcontractor, specialised in structural concrete FRP (Form-Reo-Pour), earthmoving, labour hire and plant hire. We have delivered projects nationwide, with clients across civil infrastructure, renewable energy, defence, and the high-rise residential and commercial development sectors.

## MISSION

To build with purpose, produce exceptional construction delivery, and prioritise a zero-harm workplace, always. Through our commitments to people and the planet, we aim to leave a footprint shaped by innovation, progress and leadership.

## VISION

To accelerate the construction industry's sustainable solutions across community, environment, wellbeing and technology.

## VALUES

<b>Collaboration</b>	Be united in delivery & safety.
<b>Innovation</b>	Be the gamechanger that we seek.
<b>Sustainability</b>	Be responsible to our planet and communities.
<b>Excellence</b>	Be always-exceptional to the 3 C's - clients, community and colleagues.





# OUR GROWTH

ESTABLISHED

2015

TOTAL VALUE OF COMPLETED PROJECTS

\$20m+

COMPLETED PROJECTS FROM

\$100k - \$1m+

SOUTH AUSTRALIANS EMPLOYED

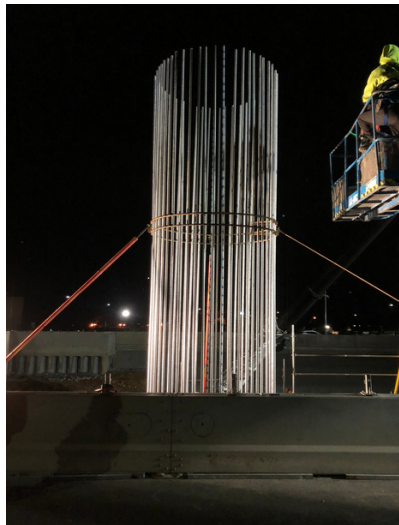
35+

\* As reported in October, 2021.



[PREMIERCONSTRUCTAU.COM](https://premierconstructau.com)





## CIVIL INFRASTRUCTURE PROJECTS





## DARLINGTON UPGRADE PROJECT

GATEWAY SOUTH JV // MAY, 2018 - CURRENT // ADELAIDE, SOUTH AUSTRALIA, AUSTRALIA

- /// Laing O'Rourke and Fulton Hogan Joint Venture.
- /// Supply of structural concrete FRP services (Form-Reo-Pour) & labour hire to construct curved walls, barriers, columns, pile caps, capping beams and more.
- /// Team members awarded for Excellence in Safety by the Department of Transport & Infrastructure.
- /// Zero LTIs (lost time injuries).



## MEYER BRIDGE REPLACEMENT PROJECT

MCCONNELL DOWELL // APR - JUL, 2020 // ADELAIDE, SOUTH AUSTRALIA, AUSTRALIA

- /// Installation of abutments, back & wing walls, footpaths, bridge deck & more to replace existing bridge, spanning from Adelaide to Seaford.
- /// Supply of structural concrete FRP services (Form-Reo-Pour).
- /// Placement of 166 m<sup>3</sup> of concrete and reinforcement fixing of 51 tonnes of steel.
- /// 10 personnel on-site. Over 6,000 work hours.
- /// Zero LTIs (lost time injuries).





## TORRENS RAIL JUNCTION PROJECT

CONNEXION ALLIANCE // NOV, 2017 - JAN, 2018 // ADELAIDE, SOUTH AUSTRALIA, AUSTRALIA

- /// Connexion Alliance was a Joint Venture between Laing O'Rourke, AECOM, KBR & SA Department of Planning, Transport & Infrastructure.
- /// Supply of structural concrete FRP services (Form-Reo-Pour), to build new rail platforms, two sets of stairs, and a 74 tonne pre-cast tank lid.
- /// The tank lid, 5.6m (W) x 6m (L) x 200mm (D), featured 16 angles & heights. Due to its size, the lid was constructed on-site to avoid transport issues.
- /// Up to 15 personnel and 1 Supervisor on-site.
- /// Completed on schedule. Zero LTIs (lost time injuries).



## PORT PIRIE SMELTER - TRANSFORMATION UPGRADE

BALLESTRIN // MAY - NOV, 2017 // PORT PIRIE, SOUTH AUSTRALIA, AUSTRALIA

- /// Construction of a new lime tank, pedestals, drive in sump, retainer wall and pedestrian walkways.
- /// Supply of project management and structural concrete FRP services (Form-Reo-Pour).
- /// Reinforcement fixing of 600 tonnes of steel.
- /// Placement of 2,000 M<sup>3</sup> of concrete.
- /// 15 personnel on-site. Over 20,000 work hours.
- /// Completed 6 weeks ahead of schedule. Zero LTIs (lost time injuries).





## MOBIL OIL TERMINAL UPGRADE

MCMAHON SERVICES // FEB, 2017 - MAR, 2018 // YARRAVILLE, VICTORIA, AUSTRALIA

- /// Upgraded two 20 million litre oil tanks located in Mobil's Yarraville oil terminal.
- /// Structural concrete FRP services (Form-Reo-Pour) to install new precast panel walls, stairs, water pits and tank foundation slabs.
- /// Placement of 1,400 m<sup>3</sup> of concrete & reinforcement fixing of 380 tonnes of steel.
- /// Up to 38 personnel on site. Over 19,200 work hours.
- /// Completed project on schedule. Zero LTIs (Lost Time Injuries).



PROJECT	CLIENT	SERVICES	START/ END DATE
MILDURA SUBSTATION UPGRADE  ADELAIDE, SA	Civil Infrastructure Group (CIG)	<ul style="list-style-type: none"> <li>Construction of pile caps and substation infrastructure.</li> <li>Supply of concrete and formwork services.</li> <li>4 personnel on-site.</li> <li>2,200 work hours.</li> <li>Zero LTIs (lost time injuries).</li> </ul>	June - September, 2019
FLINDERS PORT UPGRADE  ADELAIDE, SA	Ngurra Constructions	<ul style="list-style-type: none"> <li>Construction of new berth infrastructure, including new piers and abutments.</li> <li>Supply of structural concrete FRP services, and labour hire.</li> <li>14 personnel on-site, including 2 Supervisors.</li> <li>Zero LTIs (lost time injuries).</li> <li>Completed on schedule.</li> </ul>	March - September, 2019
QUEEN VICTORIA JUBILEE PARK ENTRANCE BRIDGE  WILLIAMSTOWN, SA	Cavco Earthmoving	<ul style="list-style-type: none"> <li>Delivered the FRP Package, involving the construction of two slabs across 3 culverts and upright walls for guard rail and protection fence.</li> <li>Supply of steel fixers, formwork and labour hire services.</li> <li>3 personnel on-site. Zero LTIs (lost time injuries).</li> </ul>	April - May, 2019
PORT PIRIE SMELTER UPGRADE - COFFERDAM  PORT PIRIE, SA	Geotech	<ul style="list-style-type: none"> <li>Re-contracted to upgrade the sea water pump station consisting of approx. 9m high and 500mm thick walls.</li> <li>Supply of structural concrete FRP services and labour hire.</li> <li>Reinforced 150 tonnes of steel, and placed 700 m<sup>3</sup> of concrete. Completed the concrete in one pour.</li> <li>16 personnel on-site. 16,000 work hours.</li> <li>Completed 1 month ahead of schedule.</li> </ul>	March, 2016 - February, 2017









## VIBE HOTEL ADELAIDE

SYNERGY CONSTRUCT // JUL, 2021- CURRENT // ADELAIDE, SOUTH AUSTRALIA, AUSTRALIA

/// Vibe Hotel Adelaide will feature 123 rooms across a 19-storey dual tower complex. The development is set to be Vibe Hotel's flagship hotel, and expected to be complete in November, 2022.

/// Supply and placement of concrete for substructures including capping beams, basement raft slab, strip footings and pile caps.





## COLES NORWOOD REDEVELOPMENT

SYNERGY CONSTRUCT // JUL, 2021 - CURRENT // NORWOOD, SOUTH AUSTRALIA, AUSTRALIA

/// The Norwood Parade transformation will introduce COMO, a 30,500 sqm mixed-use development, which will feature 24 residential 'floating' townhouses, retail and office spaces, additional carparks, and a next-generation Coles supermarket.

/// Supply of site preparation works and structural concrete FRP services (Form-Reo-Pour) to construct substructures including lift pits, elevator pits, strip footings, ground slabs, columns, capping beams and more.





## ALDINGA SUPER SCHOOL

SARAH CONSTRUCTIONS // DEC, 2020 - CURRENT // ALDINGA, SOUTH AUSTRALIA, AUSTRALIA

- /// This project is one of three new schools as part of State Government's \$1.3 billion education capital works investment program. The southern super-school will be located on Port Road, and accommodate up to 1,675 students.
- /// Structural concrete FRP services (Form-Reo-Pour) to construct concrete structures including architectural pavement, curved sandpit walls, curved seat benches, pizza oven, shed slab and more.



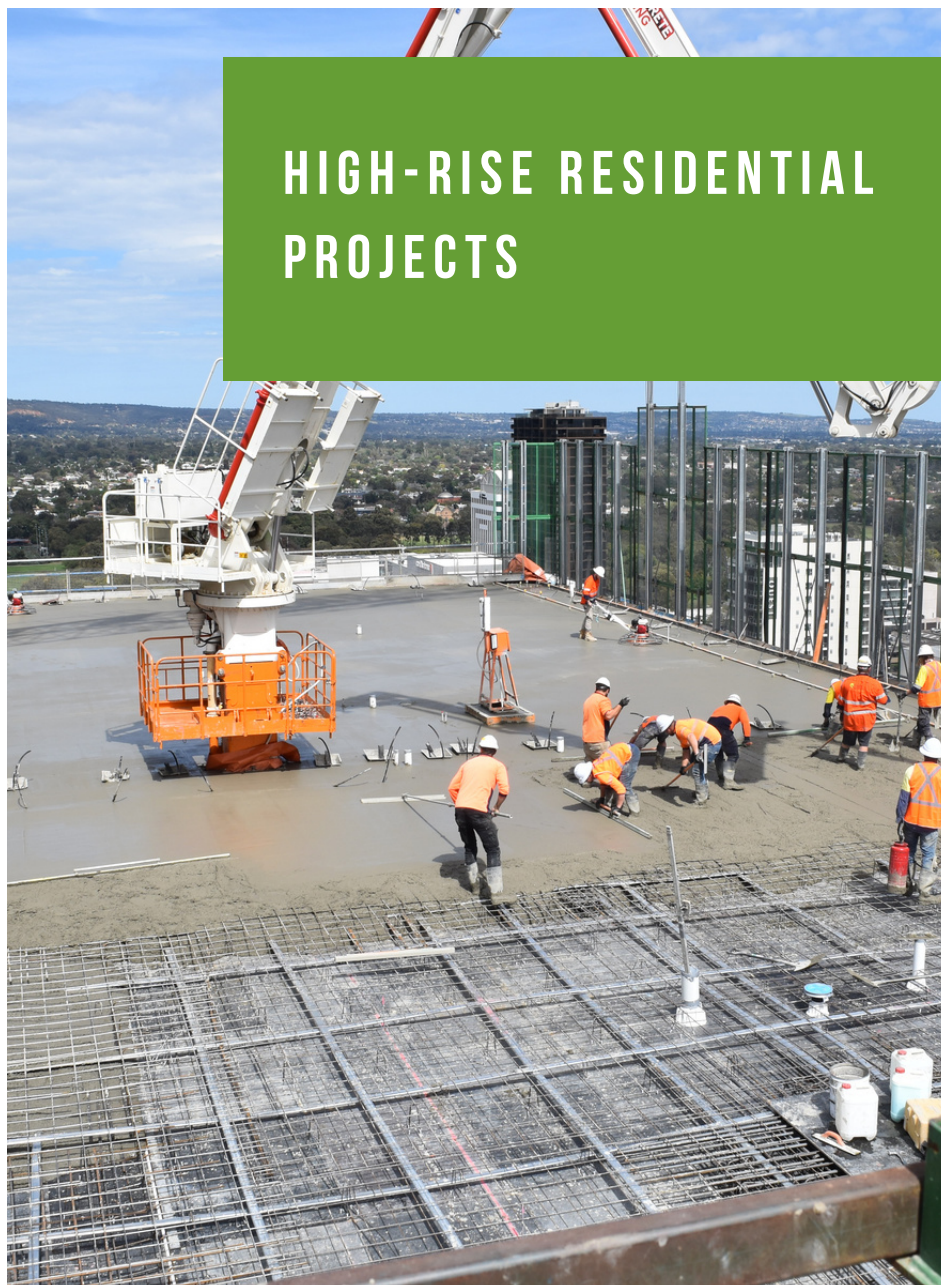
## ANGLE VALE SUPER SCHOOL UPGRADE

SARAH CONSTRUCTIONS // JUL, 2020 - CURRENT // ANGLE VALE, SOUTH AUSTRALIA, AUSTRALIA

**///** This project is one of three new schools as part of State Government's \$1.3 billion education capital works investment program. The northern super-school will be located on Riverbanks Road, and accommodate up to 1,675 students.

**///** Supply of structural concrete FRP services (Form-Reo-Pour) to construct concrete structures including fences, sandpit walls, architectural pavement, planters, shed footings, and more.





## HIGH-RISE RESIDENTIAL PROJECTS





## REALM ADELAIDE DEVELOPMENT

ORACLE STRUCTURES // OCT, 2019 - FEB, 2020 // ADELAIDE, SOUTH AUSTRALIA, AUSTRALIA

- /// One of the tallest buildings in Adelaide CBD on North Terrace at the time of construction, with 40 levels.
- /// Supply of concrete services. Managed package delivery from Floor 16.
- /// Placement of 4,560 m<sup>3</sup> of concrete.
- /// 20 personnel on-site. Over 5,400 work hours.
- /// Completed ahead of schedule. Zero LTI's (lost time injuries).





## PENNY PLACE APARTMENTS

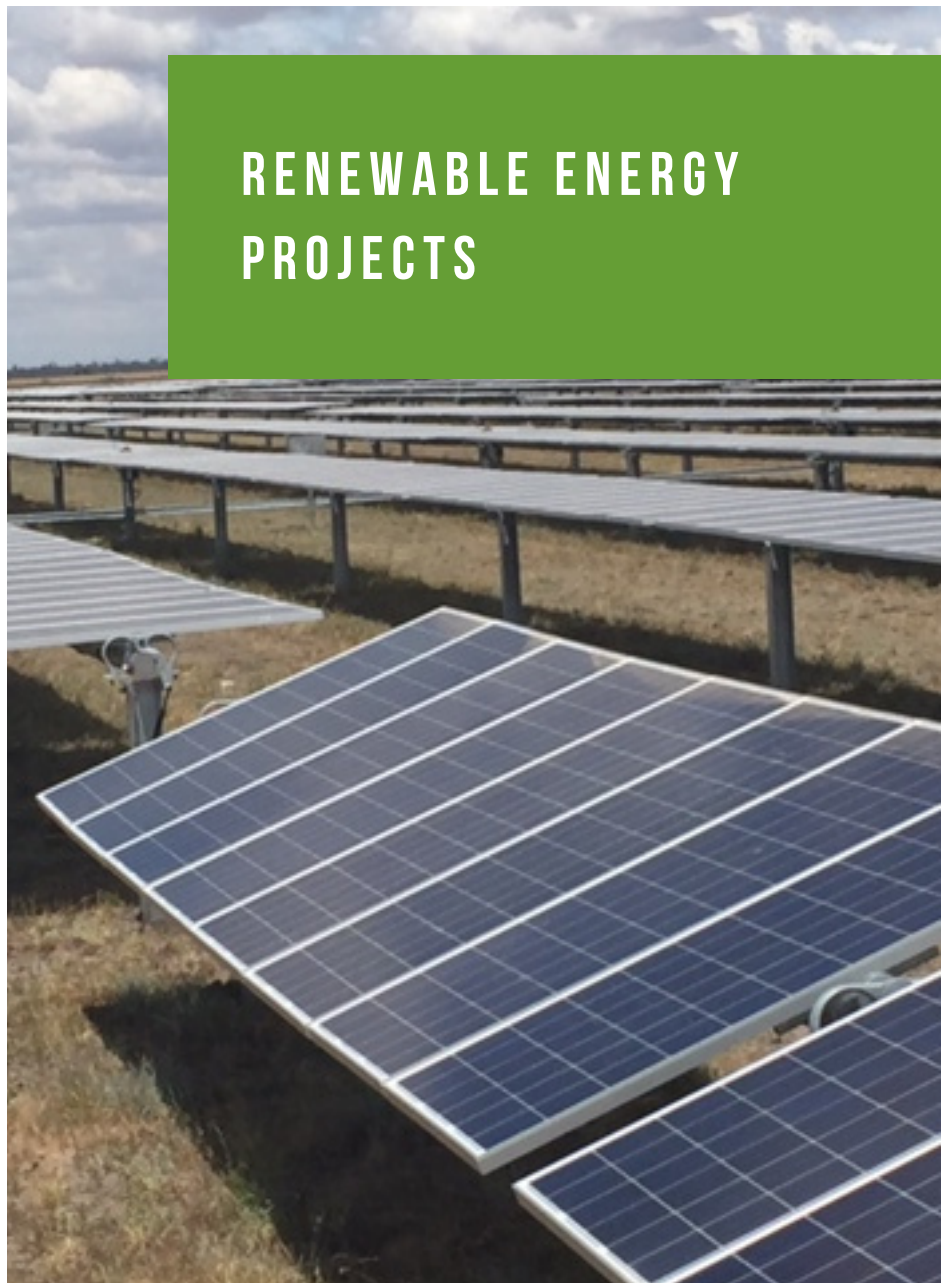
ORACLE STRUCTURES // APR - SEPT, 2020 // ADELAIDE, SOUTH AUSTRALIA, AUSTRALIA

- Construction of the 26 storey high-rise apartment block, and a separate 6 level building on-site.
- Supply of concrete and labour hire services.
- Placement of 6,000 M<sup>3</sup> of concrete for the 26 storey building, and 1,300 M<sup>3</sup> for the 6 level building.
- 20 personnel on-site. More than 4,000 work hours.
- Zero LTI's (lost time injuries).



PROJECT	CLIENT	SERVICES	START/ END DATE
ISOLA APARTMENTS, RICHMOND  MELBOURNE, VIC	Kilmay Constructions	<ul style="list-style-type: none"> <li>• Construction of residential complex consisting of 23 apartments, on-site cafe, and roof terrace.</li> <li>• Supply of steel fixing, formwork and labour hire services.</li> <li>• Constructed columns, decks and stripping formwork.</li> <li>• Works completed on schedule.</li> </ul>	January - April, 2016
G2 APARTMENTS, ELSTERNWICK  MELBOURNE, VIC	Kilmay Constructions	<ul style="list-style-type: none"> <li>• Engaged to undertake preliminary works.</li> <li>• Supply of steel fixing, formwork and labour hire services.</li> <li>• Works completed on schedule.</li> </ul>	January, 2016





## RENEWABLE ENERGY PROJECTS







## MOREE SOLAR FARM

CATCON // MAY - NOV, 2015 // MOREE, NEW SOUTH WALES, AUSTRALIA

- /// Australia's largest 56MW photovoltaic solar farm, at the time of construction. Located 10km from Moree.
- /// Supply of labour hire and fleet hire services.
- /// Installed 216,000 motorised solar modules across 2,600 hectares.
- /// 16 personnel on site. Over 21,500 work hours.
- /// Completed ahead of schedule. Zero LTI's (lost time injuries).





## HORNSDALE WIND FARM

CATCON // AUG, 2015 - APR, 2017 // JAMESTOWN, SOUTH AUSTRALIA, AUSTRALIA

- /// Contracted for Stage 1, 2 and 3 construction. Over 100 wind turbines.
- /// Supply of labour hire and concrete services.
- /// Placement of 38,000 M<sup>3</sup> of concrete and 67 tonnes of high-strength grout used.
- /// Construction of 19,800 individual foundation bolts in group sets of 200; and installation of 99 foundation bolt assemblies
- /// 10 personnel on-site. Over 36,500 work hours.
- /// All 3 stages completed on time. Zero LTI's (lost time injuries).



## BUNGALA SOLAR FARM PROJECT

CATCON // APR - JUL, 2018 // PORT AUGUSTA, SOUTH AUSTRALIA, AUSTRALIA

- /// Contracted for Stage 1 and Stage 2 works.
- /// 1.2 million solar modules mounted on one axis tracking systems, across 800 hectares of land.
- /// Supply of labour hire services and machine operators.
- /// Bracket, panel and tracker installation.
- /// 10 personnel on-site. Over 9,000 work hours.
- /// Completed on time. Zero LTI's (lost time injuries).



PROJECT	CLIENT	SERVICES	START/ END DATE
<p>BARCALDINE SOLAR FARM</p> <p>ROCKHAMPTON, QLD</p>	CATCON	<ul style="list-style-type: none"> <li>• Installation of 900,000 solar modules on one-axis tracking systems.</li> <li>• Supply of labour hire</li> <li>• 4 personnel on-site.</li> <li>• Over 4,000 work hours.</li> <li>• Bracket, panel and tracker installations.</li> </ul>	June - October, 2016
<p>WILLOGOLECHE WIND FARM</p> <p>MID-NORTH, SA</p>	CATCON	<ul style="list-style-type: none"> <li>• 32 wind turbine farm.</li> <li>• Construction of turbine bases and foundation.</li> <li>• Supply of labour hire.</li> <li>• 8 personnel on-site.</li> <li>• Over 15,000 work hours.</li> <li>• Concrete placement, finishing works and joint sealant.</li> </ul>	October, 2017 - March, 2018
<p>SILVERTON WIND FARM</p> <p>BROKEN HILL, NSW</p>	CATCON	<ul style="list-style-type: none"> <li>• 58 wind turbine farm.</li> <li>• Contract work.</li> <li>• Steel reinforcement fixing.</li> <li>• Formwork supply and install.</li> <li>• Concrete placement.</li> <li>• Materials supply.</li> <li>• 8 personnel on-site.</li> <li>• Over 8,000 work hours.</li> <li>• Completed on schedule.</li> </ul>	July, 2017 - February, 2018
<p>MOUNT EMERALD WIND FARM</p> <p>MOUNT EMERALD, QLD</p>	CATCON	<ul style="list-style-type: none"> <li>• 53 wind turbine farm.</li> <li>• Supply of labour hire.</li> <li>• Concrete placement.</li> <li>• Bolt ring assembly.</li> <li>• Boundary placement.</li> <li>• 2 personnel on-site.</li> <li>• Up to 2,000 work hours.</li> <li>• Completed on schedule.</li> </ul>	March - May, 2017



**PREMIER**  
CONSTRUCTIONS AUSTRALIA



**SA HEAD OFFICE:** 2/20 Gawler Avenue, Welland, SA, 5007  
**VIC OFFICE:** Ginibi Drive, Altona North, VIC, 3025



1800 PREMAU  
Seamus McHugh  
Managing Director



[premierconstructau.com](http://premierconstructau.com)



[smchugh@premierconstructau.com](mailto:smchugh@premierconstructau.com)

